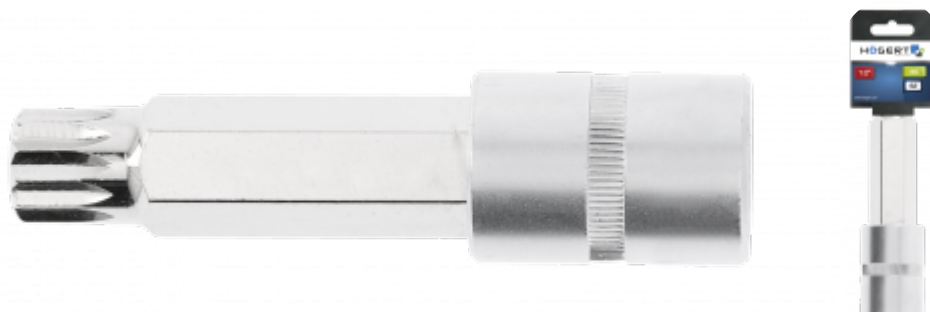


KARTA PRODUKTOWA

Pin wrench spline M5 1/2" 100mm



Opis Produktu

Indispensable tool in a car or mechanical workshop.

Charakterystyka

- size 1/2"
- socket made from high-quality alloy steel
- bit made of high quality S2 alloy steel
- drop-forged
- manufactured in accordance with the European standard DIN 3120
- hardness 58-60 HRC.

Dane techniczne

			
HT1S585	5902801296239	1	10080

Hөгert Technik GmbH, Pariser Platz 6a, 10117 Berlin, Deutschland

Producent/ Manufacturer/ Hersteller/ Произведено для:
PL GTV Poland S.A., ul. Przejazdowa 21 05-800 Pruszków, Polska/ Poland/ Polen/ Польша

Importer/ Импортёр:
HR GTV Croatia d.o.o., Kovinska 4s, 10000 Zagreb, Hrvatska

Distributor:
ES GTV España Herrajes, E Iluminación, S.L., Avenida Aragón 308, 46021 Valencia, Spain

CZ GTV Czech Distribution s.r.o., CTPark Ostrava, Na Rovince 879, 720 00 Ostrava Hrabová